



## *CEC Statement of Capabilities - Summary*

### *1 Introduction*

CEC Ltd provides a one-stop shop for professional consultancy services in ecology, landscape architecture and arboriculture.

Established in 1992 we have over 25 years' experience and a track record of successful delivery of over 3000 environmental projects and contracts ranging from simple bat surveys of dwellings to multi-million pound public realm design work.

Based in Truro, Cornwall, we cover the whole of the South West and also work on a national basis.

### *2 Ecology Services*

Themed around **Preliminary Ecological Appraisal, Protected Species, Ecological Impact, Invasive Species and Mitigation and Management**, these include:

- Building With Nature – Green Infrastructure advice and assessment
- Desk top study & ecological risk assessment
- Preliminary Ecological Appraisal (PEA)
- Bat and Barn Owl Assessment (BBOA)
- Ecological walkover surveys for infrastructure maintenance projects which do not require planning
- Protected species surveys for bats, dormice , badgers, otters, birds, reptiles etc
- Protected species licensing, including Bat Low Impact License and Badger Class Licences
- NVC (National Vegetation Classification) surveys
- Specialist flora surveys e.g. bryophytes
- Invasive species surveys and management plans e.g. Japanese Knotweed
- BREEAM 2018 (ecological credits)
- Ecological Impact Assessment (EcIA)
- Agri-environment farm advice
- Interpretation

- Freshwater and marine surveys
- Ecological mitigation scheme design and advice
- Ecological Clerk of Works and watching brief services
- Bird, bat and bee box advice and erection
- Landscape & Ecology Management Plans (LEMP)
- Construction Environment Management Plans (CEMP)

### 3 *Landscape Architecture Services*

Themed around **Green Infrastructure, Habitat Creation and Landscape Management, Landscape Design RIBA Stages 0 to 6, BREEAM, Landscape and Visual Assessment, Site Services, Contract Admin and CDM, Visualisations / GIS and Expert Witness**, these include:

- Landscape and Green Infrastructure strategies
- Building With Nature advice and design (Green Infrastructure) (BWN assessment offered through Cornwall Wildlife Trust)
- BREEAM plans to promote biodiversity
- Public Realm design
- Habitat design, including ponds and wetlands
- SuDS (Sustainable urban Drainage Systems) design for biodiversity
- Green roofs and walls
- Landscape restoration plans
- Specifications, Schedules of Works / Rates, tender documentation
- Tender process, construction stage services, contract administration, inspection on site
- Landscape masterplanning
- Detailed hard & soft landscape design
- Landscape and Visual Assessment (LVA)
- Landscape Character Assessment
- Zone of Theoretical Visibility modelling
- Input of ecology and landscape information to EIAs and EIA co-ordination

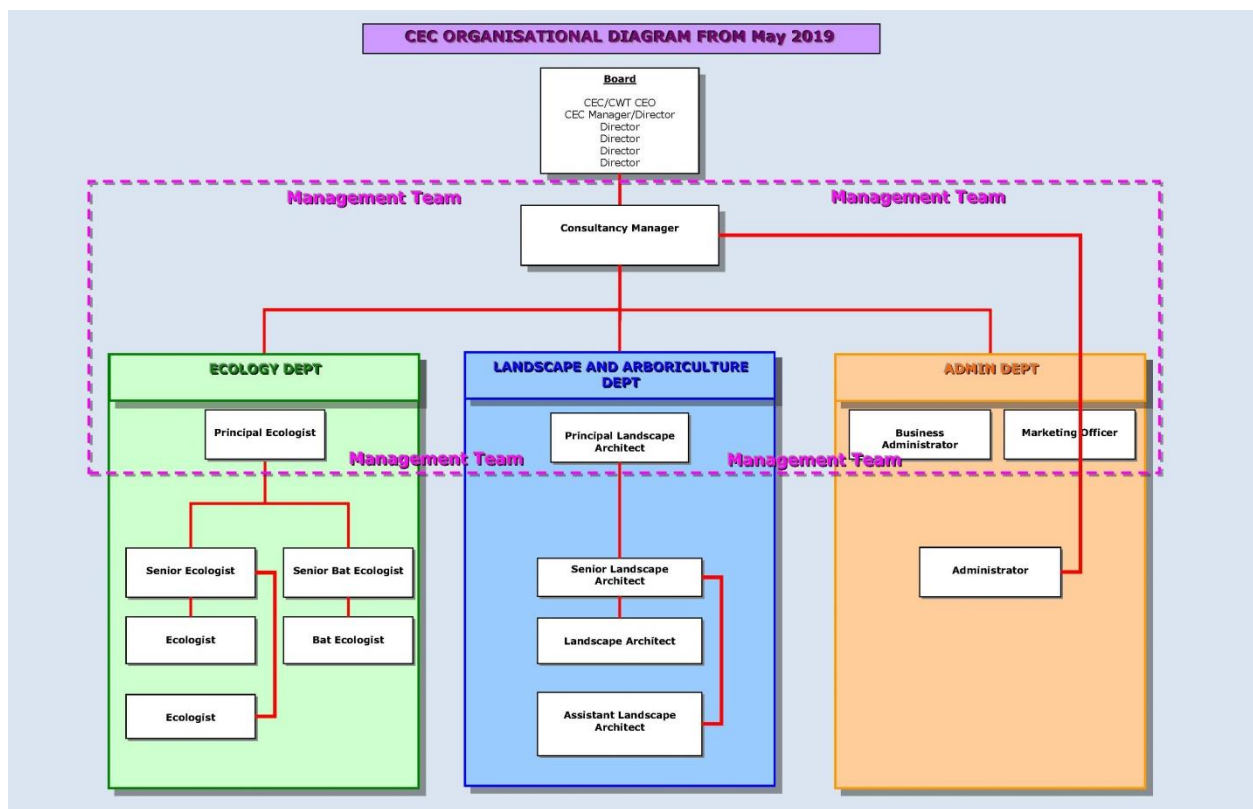
### 4 *Arboriculture Services*

Themed around **Tree Surveys (including BS5837) and related services, Condition and Woodland Surveys**, these include:

- Tree surveys to BS5837
- Tree Constraints Plans (TCP)
- Arboricultural Implications Assessments (AIA)
- Tree Protection Plans (TPP)
- Arboricultural Method Statements (AMS)
- Tree condition and safety surveys
- Woodland and forestry management surveys and plans
- Ecological tree surveys to assess trees for wildlife value and including bat potential

## 5 Staff

We have 12 FTE staff, comprising consultants, administration and management.



### 5.1 Professional Memberships

CEC is a CIEEM (Chartered Institute of Ecology and Environmental Management) registered practice and all our ecologists are members of CIEEM. Other accreditations held by staff include CEnv (Chartered Environmentalist) and CBiol (Chartered Biologist).

All our landscape architects are members of the Landscape Institute and CEC is a Registered Practice with The Landscape Institute (no. 945).

CEC Ltd is registered with the Arboricultural Association.

Staff are encouraged to take an active role in their respective professional bodies and we currently have staff serving on the local groups of both CIEEM and LI.

CEC is a trusted consultancy for Building with Nature designs and advice.

## *6 Specialist Equipment and Use of Technology*

### *6.1 Ecology*

Our ecologists use a range of equipment on surveys and site work including:

- Trail cameras – for monitoring badger setts
- A range of up-to-date bat detectors for bat surveys, including manual detectors and remote detectors (including Anabats and Songmeters)
- Endoscopes for bat surveys
- FLIR thermal imaging cameras to assist in searching for bats behind roof linings
- We keep a stock of dormouse nest tubes, reptile refuges and badger gates in-house to minimise mobilisation times for these surveys
- We also have a range of bat and bird boxes in-house for demonstration purposes
- The use of tablets for site survey work has been tested and is being developed at the moment

### *6.2 Landscape Architecture*

Our landscape architects use:

- the latest upgrade industry standard AutoCAD Civils 3D package, including Revit
- Key Terrafirma ground modelling software
- Keyscape Planting software
- National Building Specification software
- PlantPartner online data base access and subscription
- Windfarm software
- Adobe Creative Suite including PhotoShop and InDesign
- Canon EOS 5D full-frame sensor digital camera
- Sony Infinity 390 digital camera

## 7 HSQE and Registrations

CEC holds accreditations for Quality Management Systems (reg no. 184477), Environmental Management Systems (reg no. 185631) and Health & Safety Management Systems (cert no. 205410):



We are also registered with Achilles UVDB (supplier no. 052300) and Constructionline (ref no. 92436) Pre-Qualification Supplier Databases.

## 8 Insurance

We hold the following insurances:

### EMPLOYERS LIABILITY – ECOLOGY & LANDSCAPE

<b>Insurer</b>	Hiscox
<b>Policy Number</b>	1805688
<b>Period</b>	31 March 2019 to 30 March 2020
<b>Limit of Indemnity</b>	£10,000,000 any one occurrence

### PUBLIC LIABILITY - ECOLOGY & LANDSCAPE

<b>Insurer</b>	Hiscox
<b>Policy Number</b>	1805688
<b>Period</b>	31 March 2019 to 30 March 2020
<b>Limit of Indemnity</b>	£5,000,000 any one occurrence

### PROFESSIONAL INDEMNITY – ECOLOGY WORK

<b>Insurer</b>	Hiscox
<b>Policy Number</b>	1979029
<b>Period</b>	31 March 2019 to 30 March 2020
<b>Limit of Indemnity</b>	£10,000,000 any one occurrence

### PROFESSIONAL INDEMNITY – LANDSCAPE WORK

<b>BROKER</b>	McParland Finn Limited
<b>Insurer</b>	Barbican Syndicate 1955 at Lloyd's
<b>Policy Number</b>	MFL14S031380C
<b>Period</b>	16/05/2019 – 15/05/2020
<b>Limit of Indemnity</b>	£5,000,000 any one occurrence

Ends.

V3.1 – 10 April 2019